

11th Annual Medical Imaging Informatics and Teleradiology Conference

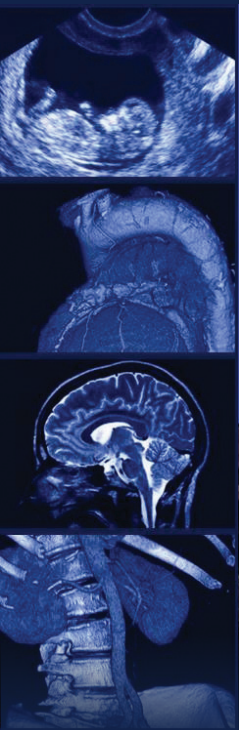
Friday, June 17th, 2016

7:30am - 5:00pm

**NEW
VENUE!**

**LIUNA
STATION**

360 James Street North
Hamilton, Ontario, Canada



TARGET AUDIENCE

This conference is intended for an audience of professionals and students in Healthcare (Radiologists, Physicians, Technologists, Industry Representatives), Health Informatics (PACS managers, DI managers, IT professionals, CIO/CTO's), and engineering and computer sciences.

LEARNING OBJECTIVES

The Medical Imaging Informatics and Teleradiology practical course addresses issues arising from the growing penetration of computers in medicine and the need to understand the new technologies necessary to acquire, process, store, and exchange medical images. This annual conference brings together experienced speakers to cover challenging topics in the field of medical imaging informatics and provides a unique opportunity to approach the experts and find answers to questions and issues.

- Talking together: standards in medical imaging
- Communication of images: network, security
- Technology of the future and impact on imaging workflow
- Radiation control and monitoring

REGISTER ONLINE: <http://fhs.mcmaster.ca/conted/register.html>



More Information
NATALIE PARK
CHSE Coordinator
P: 905-525-9140 ext. 20763
parkna@mcmaster.ca

Registration Information
cmereg@mcmaster.ca
P: 905-525-9140 ext. 22671
F: 905-572-7099
www.fhs.mcmaster.ca/conted



facebook.com/mcmaster.conted



twitter.com/mcmasterchse



ca.linkedin.com/in/mcmasterchse

AGENDA - FRIDAY, JUNE 17th, 2016

*Activity subject to change

07:30am-08:15am	REGISTRATION & BREAKFAST	1:30pm-2:05pm	Deep Learning: An Overview Brad Erickson
08:15am-08:30am	MIIT INTRODUCTION David Koff	2:05pm-2:15pm	QUESTION & ANSWER
08:30am-08:50am	ClinicalConnect: Supporting a 'Patients First' Culture Dale Anderson	2:15pm-2:35pm	PACS Consolidation and Imaging Record Quality Policies Genady Knizhnik
8:50am-9:00am	QUESTIONS & ANSWER	2:35pm-2:45pm	QUESTION & ANSWER
9:00am-9:20am	EMR Integration: Embedding Diagnostic and Enterprise Images Brad Genereaux	2:45pm-3:15pm	BREAK & VISIT EXHIBITORS
9:20am-9:30am	QUESTIONS & ANSWER	3:15pm-3:35pm	Business Intelligence and Informatics Analytics: What does it mean to Radiology? Henry Sinn
9:30am-9:50am	Reading SDO Tea Leaves: Where do DICOM, IHE and QIBA think we're Heading Kevin O'Donnell	3:35pm-3:45pm	QUESTION & ANSWER
9:50am-10:00am	QUESTION & ANSWER	3:45pm-4:05pm	Standards for Image Exchange David Clunie
10:00am-10:30am	BREAK & VISIT EXHIBITORS	4:05pm-4:15pm	QUESTION & ANSWER
10:30am-11:05am	Canada Health Infoway (CHI) Update Michael Green	4:15pm-4:35pm	Breast Tomosynthesis: Impact on IT Systems Don Dennison
11:05am-11:15am	QUESTION & ANSWER	4:35pm-4:45pm	QUESTION & ANSWER
11:15am-12:00pm	Longitudinal Patient Imaging Record in a DIR Moderator: Don Dennison Panel Discussion: David Veeneman, Jason Nagels, Sonali Kohli	4:45pm- 5:00pm	ADJOURNMENT, CLOSING REMARKS & EVALUATIONS David Koff
12:00pm-1:30pm	LUNCH & VISIT EXHIBITORS Vendor Showcase		

CONFIRMATION OF REGISTRATION

A written acknowledgement of your registration will be sent via email to registrants prior to the event. Receipts will be provided in your registrant package upon arrival at the activity. Your registration is not complete unless a confirmation is received. If you have not received a confirmation within 7 days of registration, please contact the CHSE office.

CANCELLATION POLICY

The University reserves the right to cancel an activity due to insufficient registration or any circumstances that are beyond our control. Cancellations received before **Friday, JUNE 3, 2016** will be refunded less a 25% administrative fee. No refunds will be issued for cancellations received after this date.

LIABILITY

Continuing Health Sciences Education (CHSE) hereby assumes no liability for any claims, personal injury, or damage:

- To any individual attending this activity.
- That may result from the use of technologies, programs, products and/or services at this activity.
- That may arise out of, or during this activity.

ACTIVITY PACKAGES

As the registrant your activity package includes breakfast, nutritional breaks, and lunch. Your activity lanyard must be worn at all times throughout the day.

PHOTOGRAPHY

Candid photos will be taken at the event. Your registration implies your permission for these photos to be used for promotional material. Individuals in photographs will not be identified.



DISCLOSURE OF POTENTIAL CONFLICTS OF INTEREST

In keeping with accreditation guidelines, speakers & planning committee members participating in this event have been asked to disclose to the audience any involvement with industry or other organizations that may potentially influence the presentation of the educational material. Disclosure may be done verbally or using a slide prior to the speaker's presentation.

6.0 MOC

Section 1 hours

STUDY CREDITS

McMaster University, Continuing Health Sciences Education Program (CHSE) is fully accredited by the Committee on Accreditation of Continuing Medical Education (CACME) to provide CFPC Mainpro and RCPSC Maintenance of Certification (MOC) study credits for Continuing Medical Education.

The Royal College of Physicians and Surgeons of Canada MOC Section 1:

This activity is an Accredited Group Learning Activity (Section 1) as defined by the Maintenance of Certification program of The Royal College of Physicians and Surgeons of Canada and approved by McMaster University, Continuing Health Science Education Program for up to **6.0 MOC Section 1** hours.

The American Medical Association:

Through an agreement between the Royal College of Physicians and Surgeons of Canada and the American Medical Association, physicians may convert Royal College MOC credits to AMA PRA Category 1 Credits™. Information on the process to convert Royal College MOC credit to AMA credit can be found at: www.ama-assn.org/go/internationalcme

Each healthcare provider should claim only those hours of credit that he/she actually spent in the educational activity.

DIRECTIONS

From Toronto

- QEW Niagara to 403 Hamilton
- Exit on York Blvd.
- Follow York Blvd. to John Street
- Turn LEFT on John Street and Continue North to Murray
- Turn LEFT on Murray
- LIUNA Station is on the RIGHT

From the Escarpment

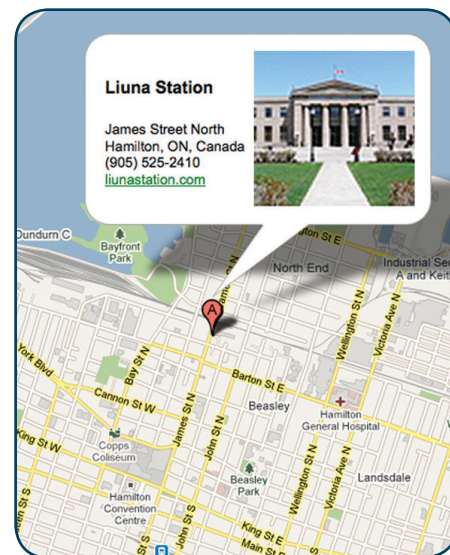
- Take Upper Wentworth exit from the 'Linc'
- Go NORTH on Upper Wentworth to Fennell
- Turn LEFT onto Fennell
- Turn RIGHT onto Upper Wellington & follow this Down the escarpment (changes into John Street)
- Follow John Street to Murray
- Turn LEFT on Murray
- LIUNA Station is on the RIGHT

From Niagara Falls

- QEW Toronto to Burlington Street
- Follow Burlington Street (using through traffic overpasses) to James Street
- Turn LEFT on James Street North & Follow to Murray
- LIUNA Station is on the LEFT

From Brantford

- 403 Hamilton / Toronto
- Exit on Main Street East
- Follow Main Street to John Street
- Turn LEFT on John Street & continue North to Murray
- Turn LEFT on Murray
- LIUNA Station is on the RIGHT



REGISTER ONLINE NOW!

<http://fhs.mcmaster.ca/conted/register.html>

PLANNING COMMITTEE

David A. Koff, MD, FRCPC

Conference Chair
Associate Professor of Radiology
Chair, Department of Radiology
McMaster University
Chief, Department of Diagnostic Imaging
Hamilton Health Sciences
Director MIIRCAM, Hamilton, ON

Don K. Dennison

Co-Chair of the Society for Imaging
Informatics in Medicine
Director at Large, Board of Directors of
SIIM
Chair, ACR Connect Committee

Natalie Park

CHSE Coordinator
Continuing Health Sciences Education
Program
McMaster University
Hamilton, ON

Angela Silla

Program Coordinator
Continuing Health Sciences Education
Program
McMaster University
Hamilton, ON



SPEAKERS

David A. Koff, MD, FRCPC

Conference Chair
Associate Professor of Radiology
Chair, Department of Radiology
McMaster University
Chief, Department of Diagnostic
Imaging
Hamilton Health Sciences
Director MIIRCAM, Hamilton, ON

Dale Anderson, HBCComm (Hons)

Senior Manager, eHealth
HITS eHealth Office
Health Information Technology
Services (HITS), a division of Hamilton
Health Sciences
Hamilton, Ontario

Brad Genereaux

Product Manager, Agfa HealthCare
Co-chair, HL7 Imaging Integration
Co-chair, DICOM WG-27 Web
Technologies

Kevin O'Donnell, MASc.

Co-Chair, DICOM Standards
Committee
Sr. Manager, System Solutions
Toshiba Medical Research Institute,
USA, Inc.
Pacifica, CA

Michael Green

President and CEO
Canada Health Infoway

David Veeneman

Manager, PACS/DI-r
Information Technology Services
London Health Sciences Centre

Jason Nagels, CIIP

Clinical Program Lead
Hospital Diagnostic Imaging
Repository Services (HDIRS)

Sonali Kohli, BSc, MSc, MBA, PMP

Program Director
GTA West Diagnostic Imaging
Repository
University Health Network

Bradley J Erickson, MD, PhD, FSIIM

Professor of Radiology
Associate Chair for Research,
Department of Radiology
Director, Radiology Informatics Lab
Mayo Clinic, Rochester

Genady Knizhnik, BSc, MBA

Healthcare IT Consultant

Henry Sinn, BAppSc, MRT(R), PDDR(HK)

Director, Medical Imaging,
Sunnybrook Health Sciences Centre
Academic Coordinator, Medical
Radiation Sciences Program,
Radiation Oncology,
Faculty of Medicine
University of Toronto

David Clunie, MBBS, FRANZCR (Ret)

PixelMed Publishing, LLC
Bangor, PA

Don K. Dennison

Healthcare IT Consultant
Director at Large
Board of Directors of SIIM
Chair, ACR Connect Committee

